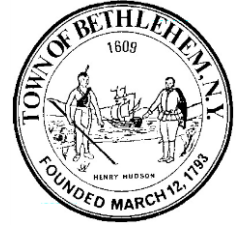


David VanLuven
Town Supervisor

Robert Leslie, AICP
Director of Planning

TOWN OF BETHLEHEM
Albany County - New York
ECONOMIC DEVELOPMENT AND PLANNING
445 DELAWARE AVENUE
DELMAR, NEW YORK 12054
(518) 439-4955 x1157
Fax: (518) 439-5808
Email: rleslie@townofbethlehem.org



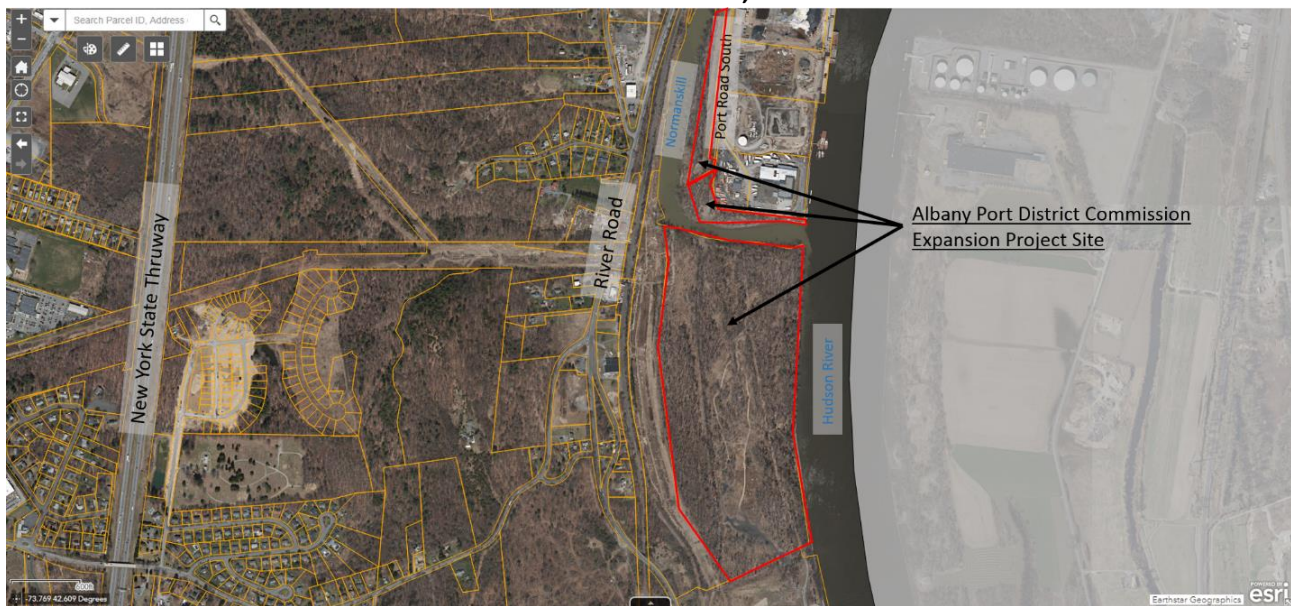
NOTICE OF PUBLIC SCOPING SESSION

Pursuant to the State Environmental Quality Review Act (SEQRA), the Bethlehem Town Board will hold a Public Scoping Session on Tuesday, 03/19/2019, 6:00 p.m., at the Bethlehem Town Hall, 445 Delaware Avenue, Delmar, NY, to solicit public comment on the Draft Scoping document for the Albany Port District Commission (APDC) Port Expansion Project. All interested persons are invited to attend and provide comments on the Draft Scope document for the Draft Generic Environmental Impact Statement. The completed Scope will serve as the outline for what will be studied in the Generic Environmental Impact Statement.

Documentation related to the application can be viewed in the Planning Dept. at Town Hall, M-F, 8:30 a.m.- 4:30 p.m. A copy of the draft Scope is available for viewing in the Town Clerk's Office as well as the Bethlehem Public Library. Said notice of public scoping session to be posted on the Town's website and published in the 03/13/2019 issue of the Spotlight Newspaper. Questions and written comments related to the project can be directed to Elizabeth Staubach, Economic Development Coordinator at estaubach@townofbethlehem.org and will be accepted through March 26, 2019.

Description of Action: The Port is proposing to construct an industrial park with 5 conceptual layouts that range from 1.13 million square feet to 160,000 square feet of industrial use facilities (warehouse space and laydown area). Each concept would include associated access roads, employee parking, trailer parking, utility extensions, rail access from the north over Normans Kill and south through the PSEG site, and a bulkhead along Hudson River for on and offloading of equipment and materials (wharf).

SITE MAP – PORT ROAD SOUTH, GLENMONT



The image (above) is for informational purposes only and may not have been prepared for, or be suitable for legal, engineering or surveying purposes. Users of this information should review or consult the primary data and information sources to ascertain the usability of the information.

Visit the Town of Bethlehem Website at <http://www.townofbethlehem.org>