

# TOWN OF BETHLEHEM

## LOCAL WATERFRONT REVITALIZATION PROGRAM UPDATE ADVISORY GROUP MEETING

MEETING #4

NOVEMBER 16, 2016



Engineering and  
Land Surveying, P.C.



PLACE  
alliance

# AGENDA



# AGENDA

1. Welcome / Updates
2. Educational Opportunity: Resiliency and Sea Level Rise, Scenic Hudson
3. Summary of Public Workshop #1
4. Refine Waterfront Revitalization Area (WRA) Boundary
5. Discuss Draft Vision
6. Next Steps
  - a. Henry Hudson Park Master Plan Refinement
  - b. Coastal Policies
  - c. Schedule LWRAG Meeting #5



# EDUCATIONAL OPPORTUNITY: RESILIENCY AND SEA LEVEL RISE, SCENIC HUDSON



# SUMMARY OF PUBLIC WORKSHOP #1



# PUBLIC WORKSHOP # 1

- **Wednesday, October 19, 2016**
  - 11:00 AM – 7:00 PM - Open House
  - 12:00 PM – 1:00 PM - Henry Hudson Park Walk and Talk
  - 7:00 PM – 8:00 PM - Presentation/Open House
  
- **Open House Activity Stations**
  1. About the Project
  2. Waterfront Revitalization Area Boundary
  3. What's Your Vision?
  4. Existing Conditions
  5. Needs/Challenges
  6. Opportunities/Ideas
  7. Henry Hudson Park Master Plan Update



## Henry Hudson Park Walk and Talk

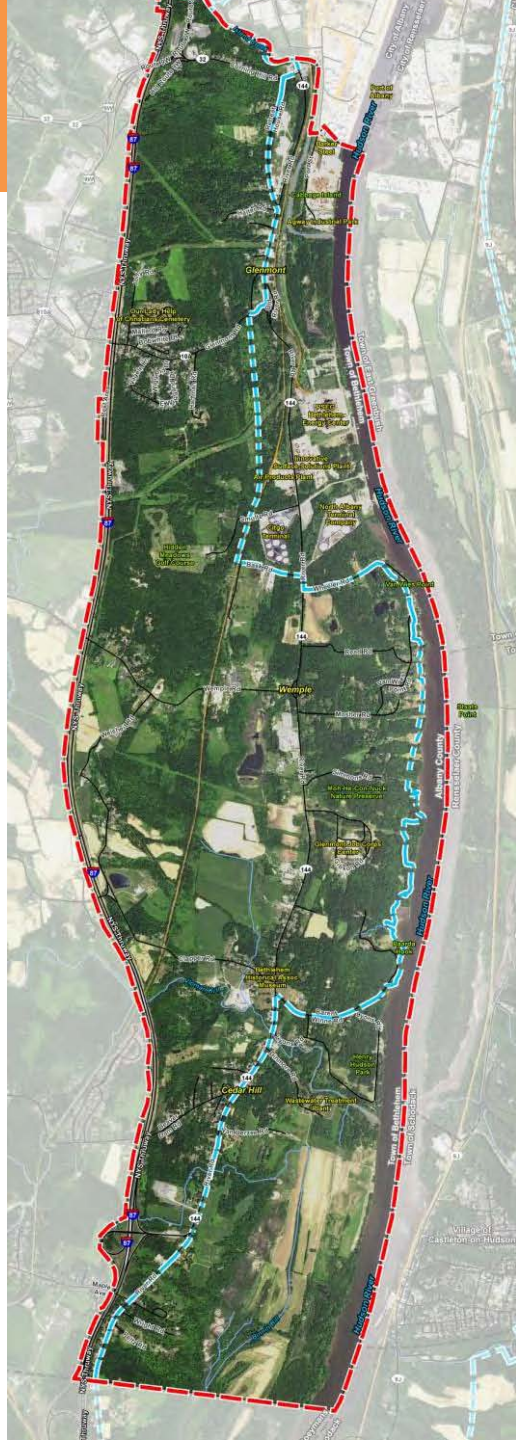
- Gather input from stakeholders on-site
- Inform design exercise by project team
- Conceptual master plan shared at public presentation



# REFINE WATERFRONT REVITALIZATION AREA (WRA) BOUNDARY







# DISCUSS DRAFT VISION



# VISION

- Developed based on input from public and LWRAG
- Supported by project goals



# WHAT WE'VE HEARD/ THEMES

- Support environmental protection and management
- Foster sustainable growth and resiliency
- Build upon innovative renewable energy initiatives
- Understand the need for both natural and built environments
- Increase public access to the waterfront
- Enhance connections between commercial, industrial, rural, and residential areas
- Encourage vibrant community character
- Strengthen and diversify community partnerships
- Respect property rights; cultivate economic opportunity
- Expand local and regional business
- Promote climate change initiatives
- Incentivize creative land use and conservation strategies
- Celebrate cultural and historic resources
- Serve as a community that balances the importance of existing character while nurturing thoughtful growth



# DRAFT VISION

The 10-mile Bethlehem waterfront area is an asset that encompasses natural and agricultural, industrial and commercial uses, recreational amenities, and low density residential communities. The LWRP seeks to balance sustainable economic growth with the preservation of the unique and diverse character of the waterfront area.

The Town strives to protect the local ecological resources and conserve agricultural lands, strengthen its physical connection to the waterfront, enhance public recreational opportunities and build resiliency for community assets. Through partnerships with property owners, business owners, and other stakeholders, the Town will realize its potential as a waterfront community.



# NEXT STEPS



# NEXT STEPS

- Henry Hudson Park Master Plan Refinement
- State Coastal Policies
- Schedule LWRAG Meeting #5 (January 2017)



THANK YOU

